

FOR LEASE INDUSTRIAL WAREHOUSE

22535 N HIGHWAY 288 BUSINESS | ANGLETON, TX 77515



WAREHOUSE A:

Available Space: 8,750 SF

Doors: (2) Drive In's (18' x 20') & (6) Grade Level

Clear Height: 24'

Wash Bay(s): (5)

Crane Served: Yes - (2) 10-ton cranes

Fenced: Yes - fully fenced & gated

Parking: Ample parking

Notes:

- Drainage lines installed for truck wash
- Filtration tanks installed
- Steam Cleaner
- 18' Overhang / Covered Space
- 90% fully insulated

WAREHOUSE B:

Available Space: 11,780 SF

Office: 3,000 SF Office (Renovated 2021)
5 - 6 Private Offices

Clear Height: 18' - 20'

Doors: (2) Grade Level

Outdoor Lighting: Yes

Parking: Ample Parking

Notes:

- Fully Insulated
- Additional land for laydown yard
- Fully stabilized land



BRANDON WUNTCH

D / 713.275.3784

M / 713.882.1739

bwuntch@fritscheanderson.com

DYLAN COLEMAN

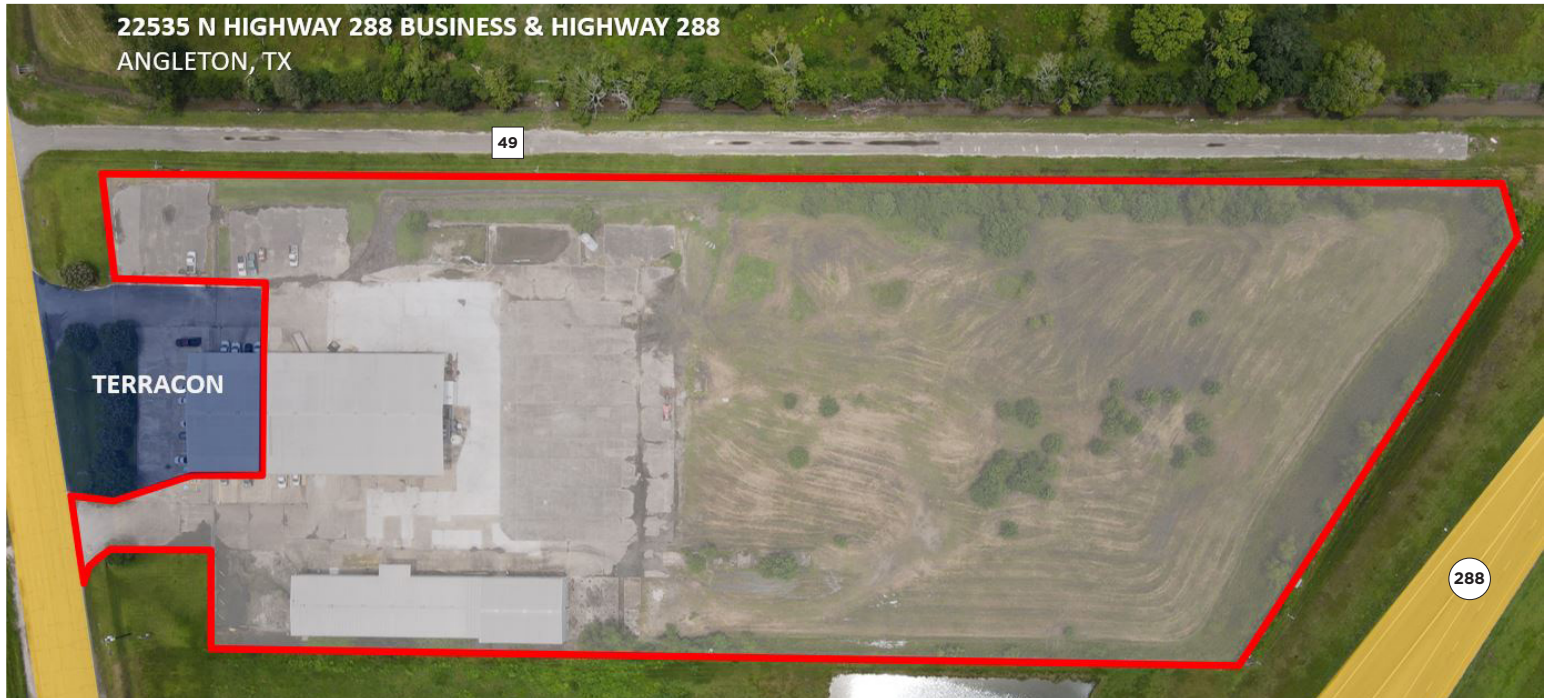
D / 713.275.3785

M / 409.673.7210

dcoleman@fritscheanderson.com

FOR LEASE INDUSTRIAL WAREHOUSE

22535 N HIGHWAY 288 BUSINESS | ANGLETON, TX 77515



BRANDON WUNTCH

D / 713.275.3784

M / 713.882.1739

bwuntch@fritscheanderson.com

DYLAN COLEMAN

D / 713.275.3785

M / 409.673.7210

dcoleman@fritscheanderson.com

FOR LEASE INDUSTRIAL WAREHOUSE

22535 N HIGHWAY 288 BUSINESS | ANGLETON, TX 77515



WAREHOUSE A - DRIVE-THROUGH



WAREHOUSE B - INTERIOR



WAREHOUSE A - EXTERIOR



WAREHOUSE B - EXTERIOR



WAREHOUSE B - INTERIOR



WAREHOUSE B - OFFICE



BRANDON WUNTCH

D / 713.275.3784
M / 713.882.1739
bwuntch@fritscheanderson.com

DYLAN COLEMAN

D / 713.275.3785
M / 409.673.7210
dcoleman@fritscheanderson.com

FOR LEASE INDUSTRIAL WAREHOUSE

22535 N HIGHWAY 288 BUSINESS | ANGLETON, TX 77515



BRANDON WUNTCH
D / 713.275.3784
M / 713.882.1739
bwuntch@fritscheanderson.com

DYLAN COLEMAN
D / 713.275.3785
M / 409.673.7210
dcoleman@fritscheanderson.com